



**Former LA's Bar and  
Grill,  
318 South 2nd Street,  
Paragould,**

**For Additional Information Contact:**

**Jason Gazaway**

Gazaway Realty, Inc.  
2210 W Kingshighway  
Suite 9

Paragould, AR 72450

[jgazaway@gazawayrealty.com](mailto:jgazaway@gazawayrealty.com)

(870) 236-1115 Office

(870) 236-1114 Fax

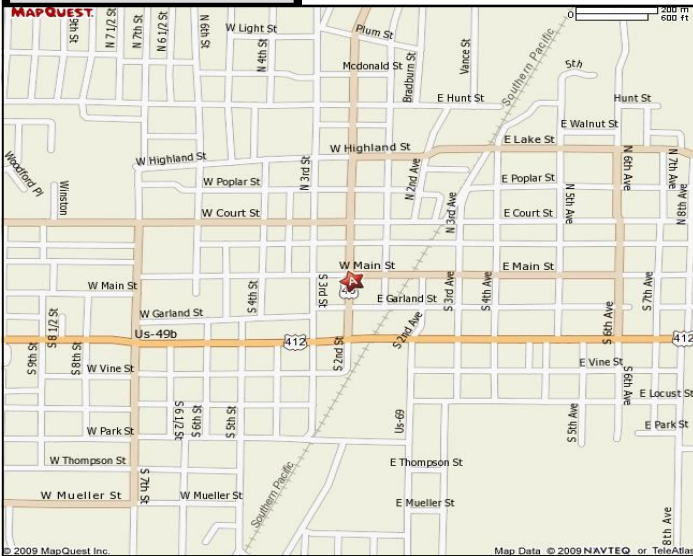
(870) 215-1300 Cell

318 S. 2nd St., Paragould, AR

**0.48 Acres**



**Location:**



**Features and Amenities:**

- Bar/Restaurant
- Well Known Location
- .48 Acres
- 4234 SF Building
- All Equipment
- \$200,000.00
- Priced To Sell



Jason Gazaway  
2210 W. Kingshighway Ste 9  
Paragould, AR 72450  
(870) 236-1115  
jgazaway@gazawayrealty.com

For more information on this property and all of our available properties, go to [www.gazawayrealty.com](http://www.gazawayrealty.com)

**Disclaimer:** The information presented herein, while not guaranteed, was obtained from sources we believe to be reliable.

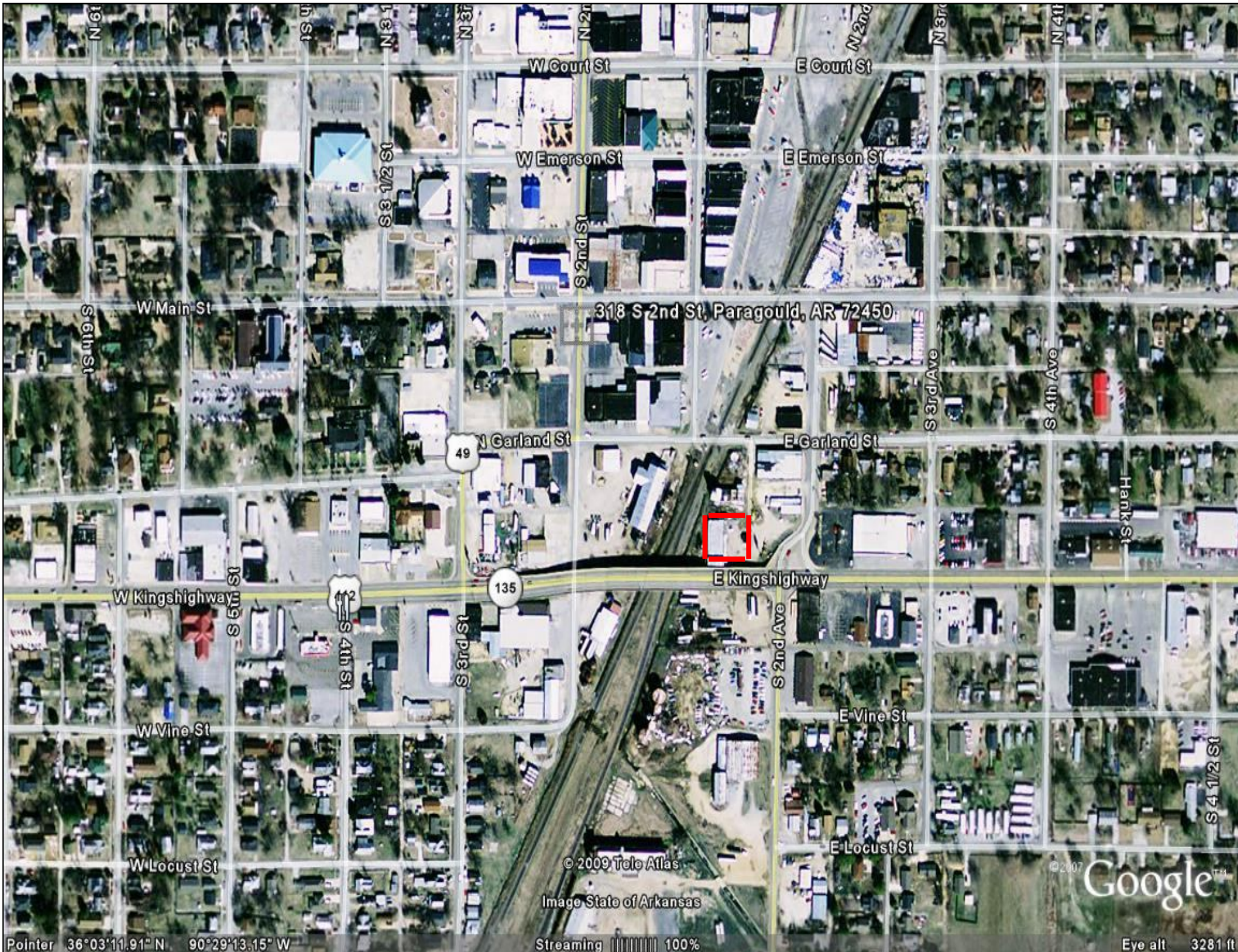
## Equipment List

### Included:

- °Walk in Freezer
- °Walk in Cooler
- °Two Hoods
- °Grill
- °Gas Range
- °Fryer
- °Refrigerator
- °Warmers
- °Prep Tables
- °Small Oven
- °TV's
- °Signs
- °Tables and Chairs
- °Surveillance System

### Not Included:

- °Coke Machine
- °Kegs and Taps
- °Pool Tables
- °Credit Card Machine
- °Beer Signs



318 S 2nd St, Paragould, AR 72450







<b>Site Type: Radius</b>	<b>Paragould Arkansas, United States Radius: 3 mile</b>	<b>Paragould Arkansas, United States Radius: 5 mile</b>	<b>Paragould Arkansas, United States Radius: 10 mile</b>
--------------------------	---	---	--

**2008 Population**

Total Population	21,491	26,952	36,958
Male Population	48.0%	48.3%	49.0%
Female Population	52.0%	51.7%	51.0%
Median Age	38.3	37.8	37.9

**2008 Income**

Median HH Income	\$39,873	\$39,988	\$40,174
Per Capita Income	\$22,814	\$21,867	\$20,904
Average HH Income	\$54,438	\$53,135	\$51,887

**2008 Households**

Total Households	8,943	10,982	14,781
Average Household Size	2.35	2.40	2.46
1990-2000 Annual Rate	1.65%	1.74%	1.93%

**2008 Housing**

Owner Occupied Housing Units	58.5%	60.5%	64.7%
Renter Occupied Housing Units	30.9%	29.3%	25.3%
Vacant Housing Units	10.6%	10.2%	9.9%

**Population**

1990 Population	17,308	21,341	28,231
2000 Population	20,068	24,939	33,584
2008 Population	21,491	26,952	36,958
2013 Population	22,737	28,675	39,532
1990-2000 Annual Rate	1.49%	1.57%	1.75%
2000-2008 Annual Rate	0.83%	0.95%	1.17%
2008-2013 Annual Rate	1.13%	1.25%	1.36%

In the identified market area, the current year population is 36,958. In 2000, the Census count in the market area was 33,584. The rate of change since 2000 was 1.17 percent annually. The five-year projection for the population in the market area is 39,532, representing a change of 1.36 percent annually from 2008 to 2013. Currently, the population is 49.0 percent male and 51.0 percent female.

**Households**

1990 Households	6,999	8,432	10,961
2000 Households	8,240	10,016	13,274
2008 Households	8,943	10,982	14,781
2013 Households	9,509	11,743	15,883
1990-2000 Annual Rate	1.65%	1.74%	1.93%
2000-2008 Annual Rate	1%	1.12%	1.31%
2008-2013 Annual Rate	1.23%	1.35%	1.45%

The household count in this market area has changed from 13,274 in 2000 to 14,781 in the current year, a change of 1.31 percent annually. The five-year projection of households is 15,883, a change of 1.45 percent annually from the current year total. Average household size is currently 2.46, compared to 2.49 in the year 2000. The number of families in the current year is 10,308 in the market area.

**Housing**

Currently, 64.7 percent of the 16,411 housing units in the market area are owner occupied; 25.3 percent, renter occupied; and 9.9 percent are vacant. In 2000, there were 14,487 housing units— 64.5 percent owner occupied, 27.0 percent renter occupied and 8.5 percent vacant. The rate of change in housing units since 2000 is 1.52 percent. Median home value in the market area is \$94,720, compared to a median home value of \$192,285 for the U.S. In five years, median home value is projected to change by 0.62 percent annually to \$97,701. From 2000 to the current year, median home value changed by 4.51 percent annually.

Source: U.S. Bureau of the Census, 2000 Census of Population and Housing. ESRI forecasts for 2008 and 2013. ESRI converted 1990 Census data into 2000 geography.



Site Type: Radius	Paragould Arkansas, United States Radius: 3 mile	Paragould Arkansas, United States Radius: 5 mile	Paragould Arkansas, United States Radius: 10 mile
<b>Median Household Income</b>			
1990 Median HH Income	\$20,080	\$20,198	\$20,623
2000 Median HH Income	\$30,495	\$30,850	\$31,368
2008 Median HH Income	\$39,873	\$39,988	\$40,174
2013 Median HH Income	\$46,725	\$46,796	\$46,802
1990-2000 Annual Rate	4.27%	4.33%	4.28%
2000-2008 Annual Rate	3.3%	3.19%	3.04%
2008-2013 Annual Rate	3.22%	3.19%	3.1%
<b>Per Capita Income</b>			
1990 Per Capita Income	\$10,611	\$10,219	\$9,977
2000 Per Capita Income	\$18,403	\$17,652	\$16,926
2008 Per Capita Income	\$22,814	\$21,867	\$20,904
2013 Per Capita Income	\$26,968	\$25,687	\$24,348
1990-2000 Annual Rate	5.66%	5.62%	5.43%
2000-2008 Annual Rate	2.64%	2.63%	2.59%
2008-2013 Annual Rate	3.4%	3.27%	3.1%
<b>Average Household Income</b>			
1990 Average Household Income	\$25,817	\$25,380	\$25,346
2000 Average Household Income	\$44,840	\$43,742	\$42,629
2008 Average HH Income	\$54,438	\$53,135	\$51,887
2013 Average HH Income	\$64,078	\$62,151	\$60,203
1990-2000 Annual Rate	5.68%	5.59%	5.34%
2000-2008 Annual Rate	2.38%	2.39%	2.41%
2008-2013 Annual Rate	3.31%	3.18%	3.02%

**Households by Income**

Current median household income is \$40,174 in the market area, compared to \$53,154 for all U.S. households. Median household income is projected to be \$46,802 in five years. In 2000, median household income was \$31,368, compared to \$20,623 in 1990.

Current average household income is \$51,887 in this market area, compared to \$73,126 for all U.S. households. Average household income is projected to be \$60,203 in five years. In 2000, average household income was \$42,629, compared to \$25,346 in 1990.

Current per capita income is \$20,904 in the market area, compared to the U.S. per capita income of \$27,916. The per capita income is projected to be \$24,348 in five years. In 2000, the per capita income was \$16,926, compared to \$9,977 in 1990.

**Population by Employment**

Total Businesses	1,200	1,453	1,645
Total Employees	12,050	15,944	17,213

Currently, 91.7 percent of the civilian labor force in the identified market area is employed and 8.3 percent are unemployed. In comparison, 93.4 percent of the U.S. civilian labor force is employed, and 6.6 percent are unemployed. In five years the rate of employment in the market area will be 92.4 percent of the civilian labor force, and unemployment will be 7.6 percent. The percentage of the U.S. civilian labor force that will be employed in five years is 93.9 percent, and 6.1 percent will be unemployed. In 2000, 62.7 percent of the population aged 16 years or older in the market area participated in the labor force, and 0.1 percent were in the Armed Forces.

In the current year, the occupational distribution of the employed population is:

- 48.9 percent in white collar jobs (compared to 60.2 percent of U.S. employment)
- 13.8 percent in service jobs (compared to 16.5 percent of U.S. employment)
- 37.3 percent in blue collar jobs (compared to 23.3 percent of U.S. employment)

In 2000, 83.6 percent of the market area population drove alone to work, and 2.1 percent worked at home. The average travel time to work in 2000 was 18.5 minutes in the market area, compared to the U.S. average of 25.5 minutes.

**Population by Education**

In 2008, the educational attainment of the population aged 25 years or older in the market area was distributed as follows:

- 22.8 percent had not earned a high school diploma (16.4 percent in the U.S.)
- 41.8 percent were high school graduates only (29.6 percent in the U.S.)
- 3.7 percent had completed an Associate degree (7.2 percent in the U.S.)
- 8.9 percent had a Bachelor's degree (17.0 percent in the U.S.)
- 3.9 percent had earned a Master's/Professional/Doctorate Degree (9.7 percent in the U.S.)