



2 Available Lots Paragould, AR

For Additional Information Contact:

Jason Gazaway

Gazaway Realty, Inc.

2210 W Kingshighway

Suite 9

Paragould, AR 72450

jgazaway@gazawayrealty.com

(870) 236-1115 Office

(870) 236-1114 Fax

FOR SALE

2 Available Lots Paragould, AR



Property Features

Lot 2
0.60 Acres
\$110,000

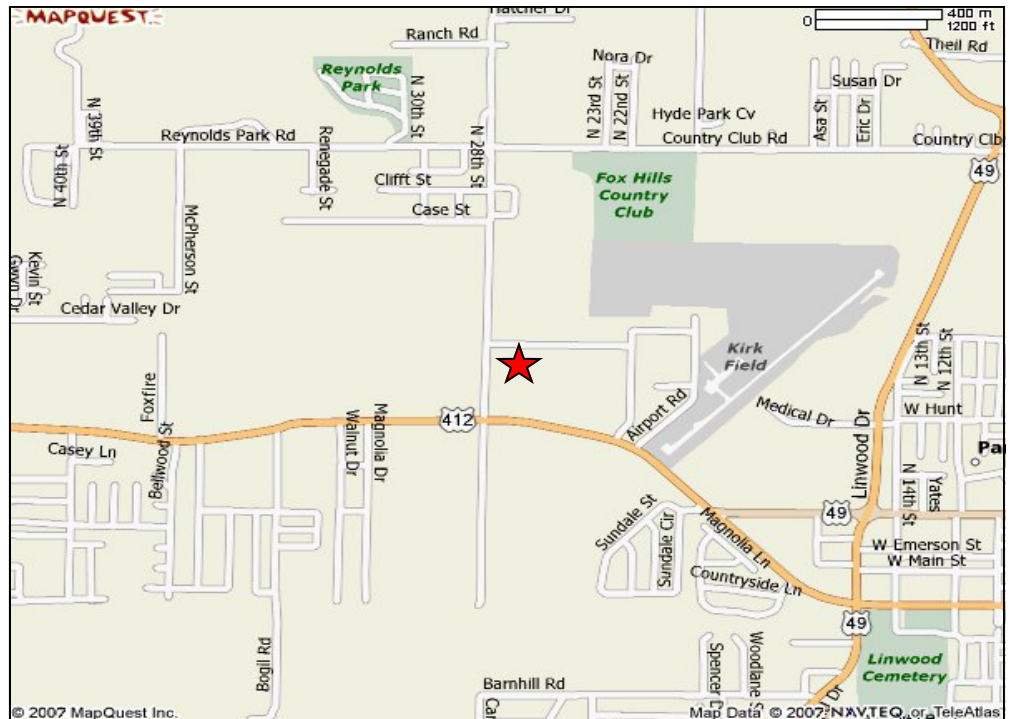
Lot 4
0.83
\$150,000

Utilities on Site

Access to Reynolds Road

Growing Area

2007 Traffic Count
Reynolds Rd 10,900
Hwy 412 W 23,000+ CPD



For more information,
please contact:

Jason Gazaway

Principal Broker

870.236.1115 Office

870-215-1300 Cell

jgazaway@gazawayrealty.com

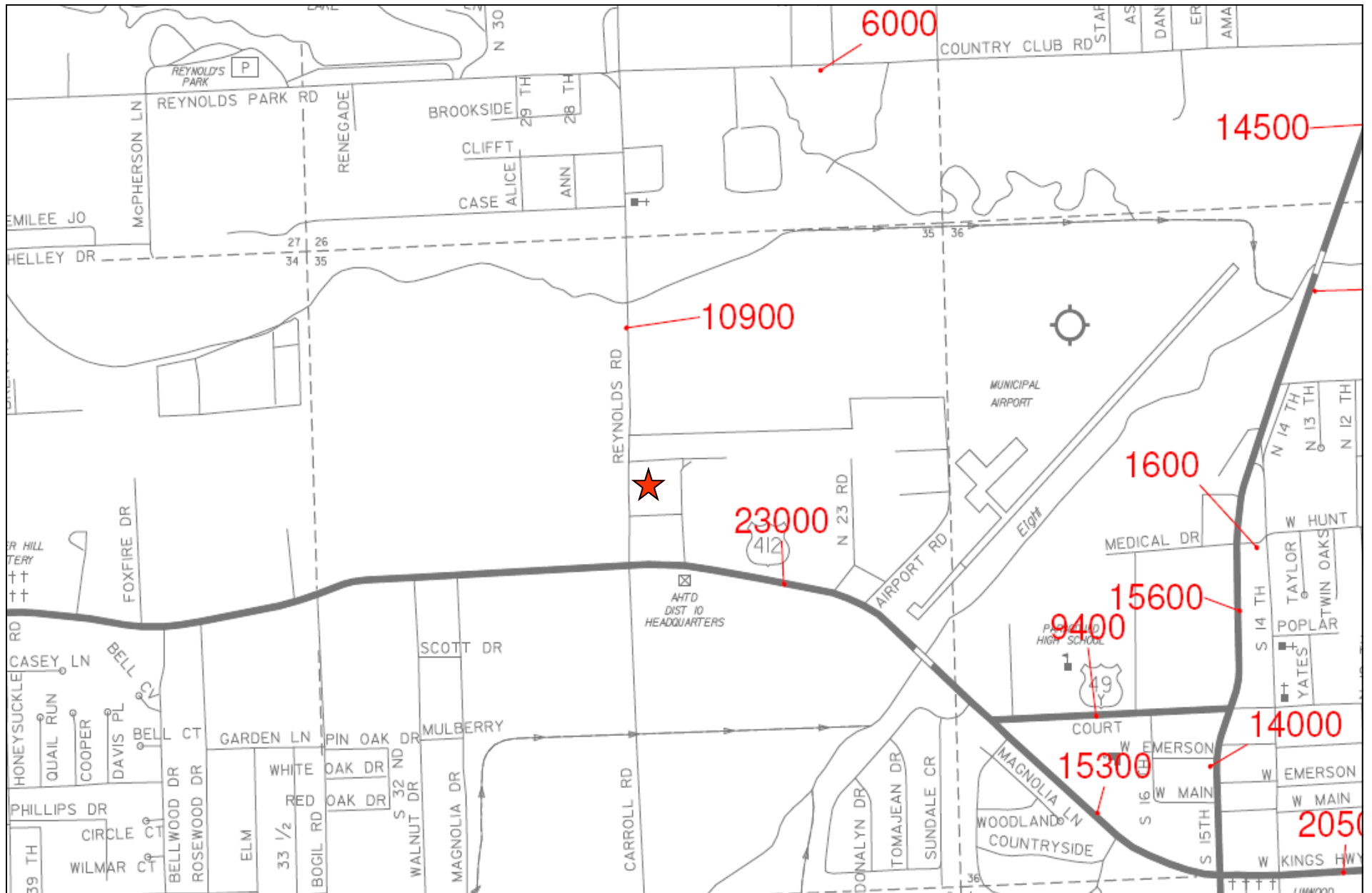
2210 W. Kingshighway, Ste 9

Paragould, AR 72450





Traffic Counts 2007





Site Type: Radius	Lat: 36.062460 Lon: -90.520665 Radius: 1.0 mile	Lat: 36.062460 Lon: -90.520665 Radius: 3.0 mile	Lat: 36.062460 Lon: -90.520665 Radius: 5.0 mile
--------------------------	--	--	--

2008 Population

Total Population	2,957	21,486	27,346
Male Population	48.7%	48.0%	48.4%
Female Population	51.3%	52.0%	51.6%
Median Age	39.0	38.3	37.8

2008 Income

Median HH Income	\$47,789	\$40,122	\$40,091
Per Capita Income	\$24,575	\$22,834	\$21,841
Average HH Income	\$61,155	\$54,567	\$53,163

2008 Households

Total Households	1,250	8,924	11,115
Average Household Size	2.26	2.35	2.41
1990-2000 Annual Rate	3.27%	1.64%	1.75%

2008 Housing

Owner Occupied Housing Units	68.1%	58.8%	60.7%
Renter Occupied Housing Units	22.2%	30.8%	29.1%
Vacant Housing Units	9.7%	10.5%	10.3%

Population

1990 Population	1,981	17,292	21,553
2000 Population	2,629	20,042	25,234
2008 Population	2,957	21,486	27,346
2013 Population	3,201	22,730	29,088
1990-2000 Annual Rate	2.87%	1.49%	1.59%
2000-2008 Annual Rate	1.44%	0.85%	0.98%
2008-2013 Annual Rate	1.6%	1.13%	1.24%

In the identified market area, the current year population is 27,346. In 2000, the Census count in the market area was 25,234. The rate of change since 2000 was 0.98 percent annually. The five-year projection for the population in the market area is 29,088, representing a change of 1.24 percent annually from 2008 to 2013. Currently, the population is 48.4 percent male and 51.6 percent female.

Households

1990 Households	791	6,985	8,500
2000 Households	1,091	8,219	10,115
2008 Households	1,250	8,924	11,115
2013 Households	1,363	9,488	11,880
1990-2000 Annual Rate	3.27%	1.64%	1.75%
2000-2008 Annual Rate	1.66%	1%	1.15%
2008-2013 Annual Rate	1.75%	1.23%	1.34%

The household count in this market area has changed from 10,115 in 2000 to 11,115 in the current year, a change of 1.15 percent annually. The five-year projection of households is 11,880, a change of 1.34 percent annually from the current year total. Average household size is currently 2.41, compared to 2.44 in the year 2000. The number of families in the current year is 7,458 in the market area.

Housing

Currently, 60.7 percent of the 12,385 housing units in the market area are owner occupied; 29.1 percent, renter occupied; and 10.3 percent are vacant. In 2000, there were 11,071 housing units— 60.5 percent owner occupied, 30.9 percent renter occupied and 8.6 percent vacant. The rate of change in housing units since 2000 is 1.37 percent. Median home value in the market area is \$98,108, compared to a median home value of \$192,285 for the U.S. In five years, median home value is projected to change by 0.8 percent annually to \$102,094. From 2000 to the current year, median home value changed by 4.72 percent annually.

Source: U.S. Bureau of the Census, 2000 Census of Population and Housing. ESRI forecasts for 2008 and 2013. ESRI converted 1990 Census data into 2000 geography.



	Lat: 36.062460 Lon: -90.520665 Radius: 1.0 mile	Lat: 36.062460 Lon: -90.520665 Radius: 3.0 mile	Lat: 36.062460 Lon: -90.520665 Radius: 5.0 mile
--	---	---	---

Site Type: Radius

Median Household Income

1990 Median HH Income	\$24,625	\$20,241	\$20,222
2000 Median HH Income	\$37,580	\$30,756	\$30,933
2008 Median HH Income	\$47,789	\$40,122	\$40,091
2013 Median HH Income	\$54,582	\$46,997	\$46,896
1990-2000 Annual Rate	4.32%	4.27%	4.34%
2000-2008 Annual Rate	2.96%	3.27%	3.19%
2008-2013 Annual Rate	2.69%	3.21%	3.18%

Per Capita Income

1990 Per Capita Income	\$11,280	\$10,635	\$10,199
2000 Per Capita Income	\$20,166	\$18,419	\$17,631
2008 Per Capita Income	\$24,575	\$22,834	\$21,841
2013 Per Capita Income	\$28,694	\$26,943	\$25,650
1990-2000 Annual Rate	5.98%	5.65%	5.63%
2000-2008 Annual Rate	2.43%	2.64%	2.63%
2008-2013 Annual Rate	3.15%	3.37%	3.27%

Average Household Income

1990 Average Household Income	\$30,386	\$25,908	\$25,367
2000 Average Household Income	\$50,543	\$44,994	\$43,794
2008 Average HH Income	\$61,155	\$54,567	\$53,163
2013 Average HH Income	\$70,887	\$64,115	\$62,171
1990-2000 Annual Rate	5.22%	5.67%	5.61%
2000-2008 Annual Rate	2.34%	2.37%	2.38%
2008-2013 Annual Rate	3%	3.28%	3.18%

Households by Income

Current median household income is \$40,091 in the market area, compared to \$53,154 for all U.S. households. Median household income is projected to be \$46,896 in five years. In 2000, median household income was \$30,933, compared to \$20,222 in 1990.

Current average household income is \$53,163 in this market area, compared to \$73,126 for all U.S. households. Average household income is projected to be \$62,171 in five years. In 2000, average household income was \$43,794, compared to \$25,367 in 1990.

Current per capita income is \$21,841 in the market area, compared to the U.S. per capita income of \$27,916. The per capita income is projected to be \$25,650 in five years. In 2000, the per capita income was \$17,631, compared to \$10,199 in 1990.

Population by Employment

Total Businesses	288	1,201	1,453
Total Employees	2,385	12,697	15,876

Currently, 91.6 percent of the civilian labor force in the identified market area is employed and 8.4 percent are unemployed. In comparison, 93.4 percent of the U.S. civilian labor force is employed, and 6.6 percent are unemployed. In five years the rate of employment in the market area will be 92.3 percent of the civilian labor force, and unemployment will be 7.7 percent. The percentage of the U.S. civilian labor force that will be employed in five years is 93.9 percent, and 6.1 percent will be unemployed. In 2000, 62.7 percent of the population aged 16 years or older in the market area participated in the labor force, and 0.1 percent were in the Armed Forces.

In the current year, the occupational distribution of the employed population is:

- 50.8 percent in white collar jobs (compared to 60.2 percent of U.S. employment)
- 13.9 percent in service jobs (compared to 16.5 percent of U.S. employment)
- 35.3 percent in blue collar jobs (compared to 23.3 percent of U.S. employment)

In 2000, 83.1 percent of the market area population drove alone to work, and 1.9 percent worked at home. The average travel time to work in 2000 was 17.3 minutes in the market area, compared to the U.S. average of 25.5 minutes.

Population by Education

In 2008, the educational attainment of the population aged 25 years or older in the market area was distributed as follows:

- 22.5 percent had not earned a high school diploma (16.4 percent in the U.S.)
- 40.7 percent were high school graduates only (29.6 percent in the U.S.)
- 3.6 percent had completed an Associate degree (7.2 percent in the U.S.)
- 9.6 percent had a Bachelor's degree (17.0 percent in the U.S.)
- 4.4 percent had earned a Master's/Professional/Doctorate Degree (9.7 percent in the U.S.)