



25.48 Acre Development Jonesboro, AR

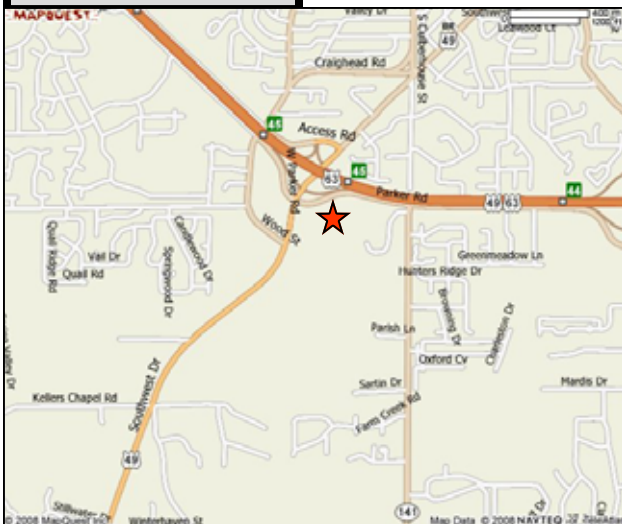
For Additional Information Contact:

Jason Gazaway
Gazaway Realty, Inc.
2210 W Kingshighway
Suite 9
Paragould, AR 72450
jgazaway@gazawayrealty.com
(870) 236-1115 Office
(870) 236-1114 Fax
(870) 215-1300 Cell

25.48 Acre Development Jonesboro, AR



Location:

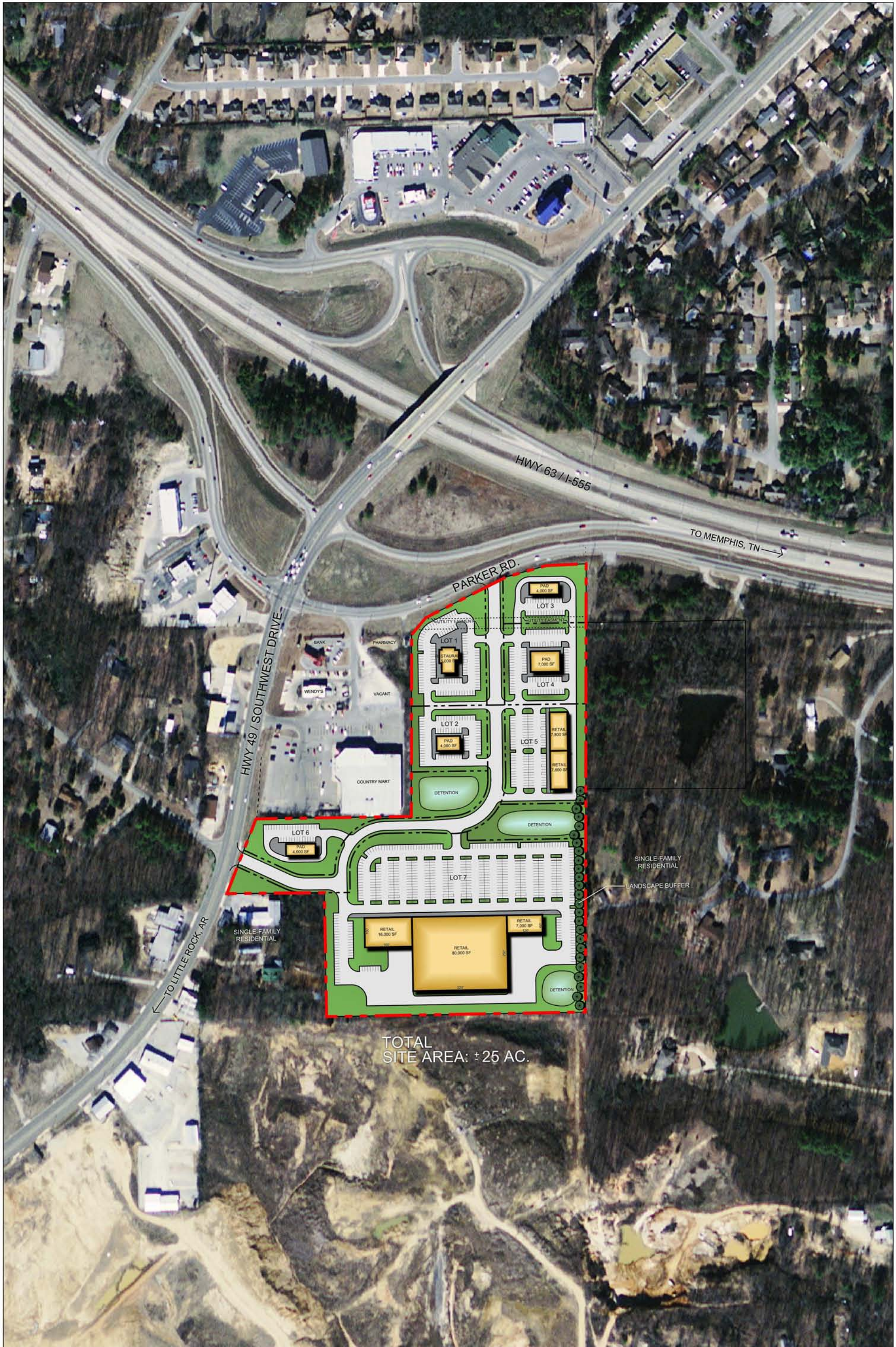


Features and Amenities:

- 25.48 Acre Development
- Lot 1 1.75 acres m/l \$1,250,000.00
- Lot 2 1.0 acres m/. \$500,000.00
- Lot 3 1.0 acres m/l \$700,000.00
- Lot 4 1.25 acres m/l \$600,000.00
- Lot 5 Acreage TBD
- Lot 6 Acreage TBD
- Lease Space Available TBD
- 5 Mile Population 55,295
- 5 Mile Avg HH Income \$57,679
- 5 Mile Households 22,340



Jason Gazaway
2210 W. Kingshighway Ste 9
Paragould, AR 72450
(870) 236-1115
jgazaway@gazawayrealty.com



HWY 49 / SOUTHWEST DRIVE

PARKER RD.

HWY 63 / I-555

TO MEMPHIS, TN

TO LITTLE ROCK, AR

SINGLE-FAMILY RESIDENTIAL

BANK
PHARMACY
WENDY'S
VACANT
COUNTRY MART

LOT 1
STALURA
3,000 SF

PAD
4,000 SF
LOT 3

PAD
7,000 SF
LOT 4

LOT 2
PAD
4,000 SF

LOT 5
RETAIL
7,800 SF

RETAIL
7,800 SF

LOT 6
PAD
4,000 SF

LOT 7

RETAIL
16,000 SF

RETAIL
80,000 SF

RETAIL
7,000 SF

SINGLE-FAMILY RESIDENTIAL

LANDSCAPE BUFFER

TOTAL SITE AREA: ± 25 AC.



NORTH

0 300'

SCALE: 1" = 300'

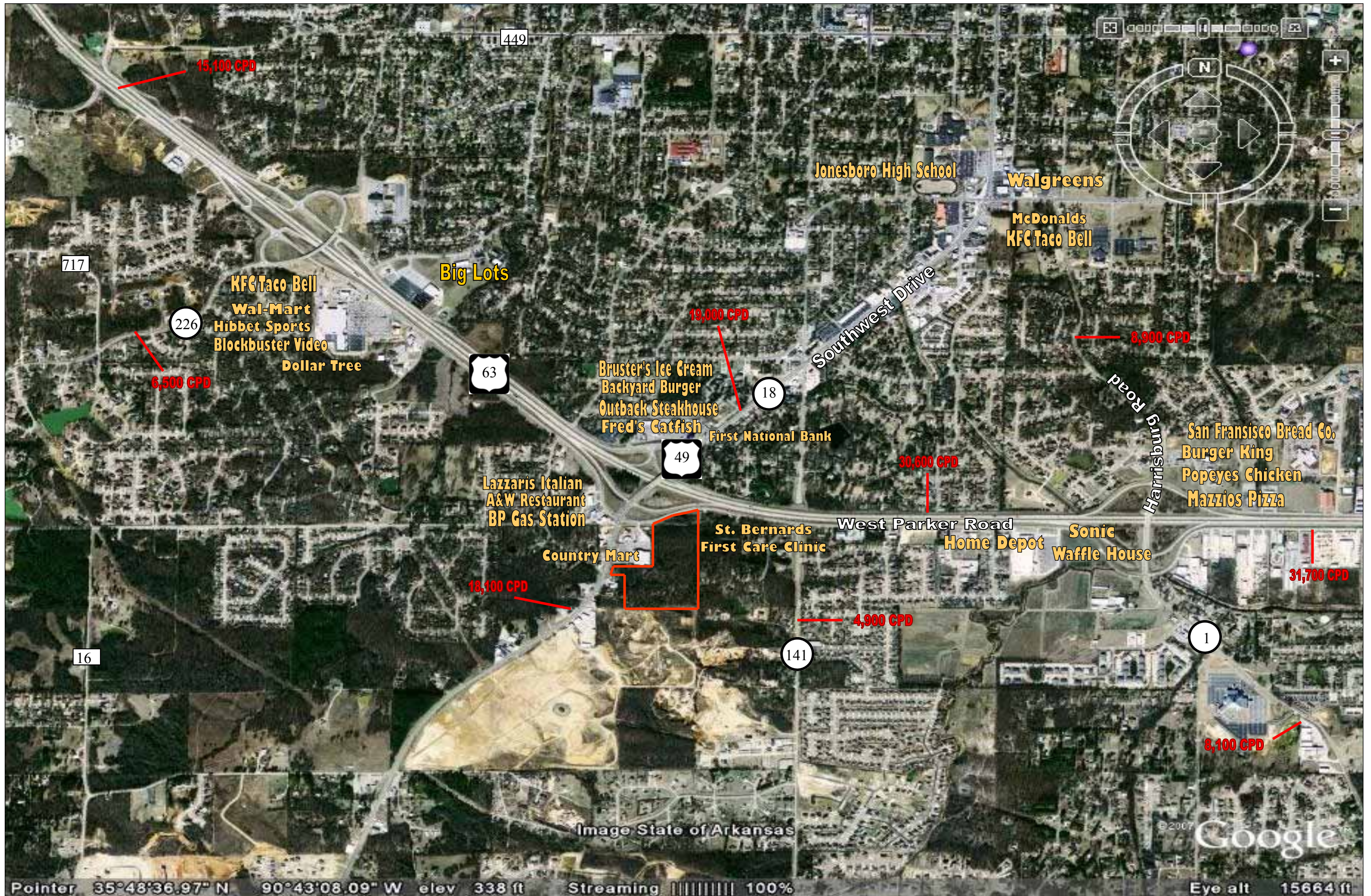
COMMERCIAL CENTER - CONCEPT A

JONESBORO, AR



LUTJEN

8350 N. Saint Clair Ave.
Kansas City, MO 64151
816.587.4320
816.587.1393 fax
www.lutjen.com
surveying
planning
engineering
landscape architecture





Site Type: Radius	3106 Southwest Dr Jonesboro, AR 72404 Radius: 1.0 mile	3106 Southwest Dr Jonesboro, AR 72404 Radius: 3.0 mile	3106 Southwest Dr Jonesboro, AR 72404 Radius: 5.0 mile
--------------------------	---	---	---

2008 Population

Total Population	5,263	33,481	56,281
Male Population	48.2%	47.9%	48.2%
Female Population	51.8%	52.1%	51.8%
Median Age	40.9	36.8	33.3

2008 Income

Median HH Income	\$67,172	\$51,467	\$43,135
Per Capita Income	\$36,201	\$28,537	\$24,092
Average HH Income	\$93,662	\$68,409	\$59,060

2008 Households

Total Households	2,045	13,887	22,640
Average Household Size	2.53	2.36	2.39
1990-2000 Annual Rate	3.24%	2.63%	2.06%

2008 Housing

Owner Occupied Housing Units	76.1%	57.7%	52.2%
Renter Occupied Housing Units	17.6%	32.7%	37.2%
Vacant Housing Units	6.3%	9.6%	10.5%

Population

1990 Population	3,796	24,094	43,448
2000 Population	5,028	30,176	51,290
2008 Population	5,263	33,481	56,281
2013 Population	5,607	35,581	59,611
1990-2000 Annual Rate	2.85%	2.28%	1.67%
2000-2008 Annual Rate	0.56%	1.27%	1.13%
2008-2013 Annual Rate	1.27%	1.22%	1.16%

In the identified market area, the current year population is 56,281. In 2000, the Census count in the market area was 51,290. The rate of change since 2000 was 1.13 percent annually. The five-year projection for the population in the market area is 59,611, representing a change of 1.16 percent annually from 2008 to 2013. Currently, the population is 48.2 percent male and 51.8 percent female.

Households

1990 Households	1,418	9,660	16,772
2000 Households	1,951	12,526	20,557
2008 Households	2,045	13,887	22,640
2013 Households	2,185	14,785	24,048
1990-2000 Annual Rate	3.24%	2.63%	2.06%
2000-2008 Annual Rate	0.57%	1.26%	1.18%
2008-2013 Annual Rate	1.33%	1.26%	1.21%

The household count in this market area has changed from 20,557 in 2000 to 22,640 in the current year, a change of 1.18 percent annually. The five-year projection of households is 24,048, a change of 1.21 percent annually from the current year total. Average household size is currently 2.39, compared to 2.38 in the year 2000. The number of families in the current year is 13,918 in the market area.

Housing

Currently, 52.2 percent of the 25,301 housing units in the market area are owner occupied; 37.2 percent, renter occupied; and 10.5 percent are vacant. In 2000, there were 22,465 housing units— 51.9 percent owner occupied, 39.7 percent renter occupied and 8.4 percent vacant. The rate of change in housing units since 2000 is 1.45 percent. Median home value in the market area is \$107,756, compared to a median home value of \$192,285 for the U.S. In five years, median home value is projected to change by 0.65 percent annually to \$111,290. From 2000 to the current year, median home value changed by 2.93 percent annually.

Source: U.S. Bureau of the Census, 2000 Census of Population and Housing. ESRI forecasts for 2008 and 2013. ESRI converted 1990 Census data into 2000 geography.



Site Type: Radius	3106 Southwest Dr Jonesboro, AR 72404 Radius: 1.0 mile	3106 Southwest Dr Jonesboro, AR 72404 Radius: 3.0 mile	3106 Southwest Dr Jonesboro, AR 72404 Radius: 5.0 mile
-------------------	--	--	--

Median Household Income

1990 Median HH Income	\$38,125	\$27,409	\$22,987
2000 Median HH Income	\$50,000	\$37,570	\$31,771
2008 Median HH Income	\$67,172	\$51,467	\$43,135
2013 Median HH Income	\$76,802	\$62,364	\$52,713
1990-2000 Annual Rate	2.75%	3.2%	3.29%
2000-2008 Annual Rate	3.64%	3.89%	3.78%
2008-2013 Annual Rate	2.72%	3.92%	4.09%

Per Capita Income

1990 Per Capita Income	\$19,710	\$15,626	\$12,397
2000 Per Capita Income	\$26,241	\$21,306	\$17,830
2008 Per Capita Income	\$36,201	\$28,537	\$24,092
2013 Per Capita Income	\$44,392	\$34,160	\$28,620
1990-2000 Annual Rate	2.9%	3.15%	3.7%
2000-2008 Annual Rate	3.98%	3.61%	3.72%
2008-2013 Annual Rate	4.16%	3.66%	3.5%

Average Household Income

1990 Average Household Income	\$54,194	\$38,933	\$31,956
2000 Average Household Income	\$68,756	\$50,523	\$43,818
2008 Average HH Income	\$93,662	\$68,409	\$59,060
2013 Average HH Income	\$114,746	\$81,802	\$70,065
1990-2000 Annual Rate	2.41%	2.64%	3.21%
2000-2008 Annual Rate	3.82%	3.74%	3.68%
2008-2013 Annual Rate	4.14%	3.64%	3.48%

Households by Income

Current median household income is \$43,135 in the market area, compared to \$53,154 for all U.S. households. Median household income is projected to be \$52,713 in five years. In 2000, median household income was \$31,771, compared to \$22,987 in 1990.

Current average household income is \$59,060 in this market area, compared to \$73,126 for all U.S. households. Average household income is projected to be \$70,065 in five years. In 2000, average household income was \$43,818, compared to \$31,956 in 1990.

Current per capita income is \$24,092 in the market area, compared to the U.S. per capita income of \$27,916. The per capita income is projected to be \$28,620 in five years. In 2000, the per capita income was \$17,830, compared to \$12,397 in 1990.

Population by Employment

Total Businesses	275	2,797	4,120
Total Employees	1,852	21,012	31,102

Currently, 92.0 percent of the civilian labor force in the identified market area is employed and 8.0 percent are unemployed. In comparison, 93.4 percent of the U.S. civilian labor force is employed, and 6.6 percent are unemployed. In five years the rate of employment in the market area will be 92.6 percent of the civilian labor force, and unemployment will be 7.4 percent. The percentage of the U.S. civilian labor force that will be employed in five years is 93.9 percent, and 6.1 percent will be unemployed. In 2000, 66.9 percent of the population aged 16 years or older in the market area participated in the labor force, and 0.0 percent were in the Armed Forces.

In the current year, the occupational distribution of the employed population is:

- 59.9 percent in white collar jobs (compared to 60.2 percent of U.S. employment)
- 16.1 percent in service jobs (compared to 16.5 percent of U.S. employment)
- 24.0 percent in blue collar jobs (compared to 23.3 percent of U.S. employment)

In 2000, 82.9 percent of the market area population drove alone to work, and 2.5 percent worked at home. The average travel time to work in 2000 was 16.4 minutes in the market area, compared to the U.S. average of 25.5 minutes.

Population by Education

In 2008, the educational attainment of the population aged 25 years or older in the market area was distributed as follows:

- 16.3 percent had not earned a high school diploma (16.4 percent in the U.S.)
- 29.7 percent were high school graduates only (29.6 percent in the U.S.)
- 4.4 percent had completed an Associate degree (7.2 percent in the U.S.)
- 17.6 percent had a Bachelor's degree (17.0 percent in the U.S.)
- 10.7 percent had earned a Master's/Professional/Doctorate Degree (9.7 percent in the U.S.)



About ASU

university communications office



***"Arkansas State University educates leaders,
enhances intellectual growth and enriches lives."***

Arkansas State University enjoys a reputation as a quality regional institution of higher education and is recognized for offering special services to the people of the Arkansas Delta. It is the only comprehensive public university located in this region. Dedicated to teaching, research and service, the university provides students with the broad educational foundations that help develop critical thinking and analytical skills, decision-making capabilities, and communication skills. Dr. Les Wyatt is president of the Arkansas State University System, and Dr. Robert L. Potts became chancellor of the ASU-Jonesboro campus on Nov. 15, 2006.

This institution was founded in Jonesboro in 1909 by the Arkansas Legislature as a regional agricultural training school. It began offering a two-year college program in 1918, then became "First District Agricultural and Mechanical College" in 1925. A four-year degree program was begun in 1930, then A & M College became "Arkansas State College" in 1933. The Arkansas Legislature elevated the college to university status and changed the name to Arkansas State University in 1967. Today, the institution has more than 59,000 alumni.



Degree Programs

Master's degree graduate programs were initiated in 1955, and ASU began offering its first doctoral degree, in educational leadership, in the fall of 1992. A second doctoral program, in environmental science, was begun in the fall of 1997, and the doctoral program in heritage studies began in the fall of 2001. The doctoral program in molecular biosciences began in the spring of 2006. Programs at the specialist's, master's, bachelor's and associate's degree levels are available through the various colleges: Agriculture, Business, Communications, Education, Engineering, Fine Arts, Humanities and Social Sciences, Nursing and Health Professions, Sciences and Mathematics, and University College. Classes also are offered through The Honors College and the independent Department of Military Science. More information about the various colleges and academic departments is available through the [Office of Academic Affairs and Research](#).

Accreditation

Arkansas State University's commitment to excellence in higher education is demonstrated by its accreditation by The Higher Learning Commission of the North Central Association, as well as 18 specialized accrediting organizations. In addition, the university holds membership in several national organizations which support the highest educational standards.

The ASU System

The ASU system includes campuses **Jonesboro** (Craighead County), which offers degree programs through the doctoral level; **Beebe** (White County), **Mountain Home** (Baxter County), and **Newport** (Jackson County), where associate degree programs are offered; and at **Heber Springs**, **Marked Tree** and **Searcy**. Arkansas State University-Beebe became part of the ASU system in 1955. It associated with White River Vo-Tech at Newport in 1992; that campus has attained stand-alone status and is now Arkansas State University-Newport. The Mountain Home campus officially became ASU-Mountain Home on July 1, 1995. Delta Technical Institute at Marked Tree merged with ASU and became Arkansas State University Technical Center on July 1, 2001. A new campus is being built for ASU-Heber Springs, which operates as a sister campus of ASU-Beebe. Foothills Technical Institute at Searcy was merged with ASU-Beebe on July 1, 2003, and is now ASU-Searcy, a technical institute of ASU-Beebe.

ASU offers bachelor's degree programs, master's degree programs and upper level courses through ASU degree centers at ASU-Beebe, ASU-Mountain Home, and three other cities -- Blytheville, Forrest City and West Memphis -- where partnership agreements have been established in cooperation with the local community colleges. ASU also operates instructional sites at nearby Paragould, in Greene County, and at Little Rock Air Force Base.

Enrollment Growth

ASU has grown significantly over the past 20 years; the Jonesboro campus enrollment in the fall of 1981 was 7,448; five years later it was 8,526, and by 1991 it had grown to 9,717. Five years ago the fall enrollment at Jonesboro stood at 10,309. Today, because of the close partnerships between the campuses, ASU reports a combined enrollment for its system of campuses. Total system enrollment in the fall of 2006 was 17,401.

Opportunities

For information about educational opportunities at ASU, contact the Office of Admissions, admissions@astate.edu or call 870-972-3024 or 800-382-3030. For information about Graduate School, write to gradsch@astate.edu or call 870-972-3029. For additional details about the university, contact University Communications, tmoore@astate.edu. Additional contact information, mailing addresses and telephone numbers are available <http://www.astate.edu/sections/directories/contact>.

Return to the [Top](#) | [ASU Home Page](#)

Summary compiled by:

Office of University Communications, Arkansas State University
P.O. Box 1990, State University, AR 72467

Telephone: (870) 972-3056; Facsimile: (870) 972-3069

Page maintained by: Thomas Moore, tmoore@astate.edu

Last revised on July 27, 2007



**ST. BERNARDS
HEALTHCARE**

**225 E. Jackson
Jonesboro, AR 72401
870-972-4100**

St. Bernards Medical Center is a 375-bed facility serving as a regional referral center for 23 counties. The now seven block St. Bernards campus and outlying facilities continue to evolve and grow in the direct response to the most pressing needs of the community. St. Bernards was recently recognized as one of just nine "Employers of Choice" in the country. St. Bernards offers the latest in technology and expertise and offers all clinical specialties.

The Emergency Department has 26-beds with a 6-bed Express Care as well as a 5-bed Chest Pain Center. The ED sees 47,000 patients annually with a 17% admission rate; 41% of hospital admissions are thru the Emergency Department. There are 53-hours of physician coverage daily with 12-hours of mid-level coverage. Excellent clinical support and superior ancillary back-up all specialties.

NEA Baptist Memorial Hospital



3024 Stadium Blvd.
Jonesboro, AR 72401
870-972-7000

In November 2007, Baptist partnered with [NEA Clinic](#), the largest physician-owned, multispecialty medical group practice in Arkansas, to meet the health care needs of the northeast Arkansas community through **NEA Baptist Memorial Hospital**.

Daily Bread

Are not all angels ministering
spirits sent to serve those who
will inherit salvation?

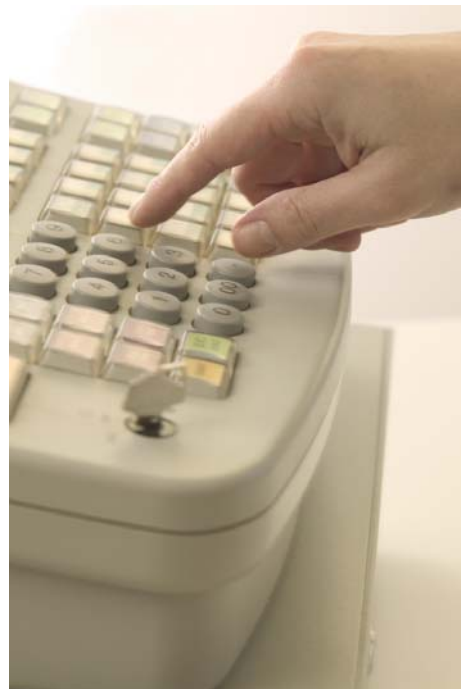
Hebrews 1:14

The 104-bed hospital in Jonesboro, Ark., has all-private rooms and offers extensive inpatient and outpatient services – emergency department, surgical services, neurology, respiratory care, cancer care, pulmonary rehabilitation and more.

NEA Baptist Memorial Hospital also features advanced heart care through the The Heart Institute of NEA and labor & delivery through the hospital's Women's Center.

www.neamedicalcenter.com

JONESBORO ARKANSAS RETAIL TRADE AREA



JONESBORO RETAIL TRADE AREA CONTENTS

- ★ JONESBORO RETAIL TRADE AREA MAP
- ★ TRADE AREA COUNTIES
- ★ POPULATION TRENDS
- ★ MAJOR RETAILERS
- ★ TRADE AREA DEMOGRAPHIC SUMMARY
- ★ TRADE AREA AGE BY SEX SUMMARY
- ★ TRADE AREA RANK BY AGE
- ★ TRADE AREA RANK BY INCOME
- ★ TRADE AREA CONSUMER EXPENDITURE SUMMARY

SOURCE OF INFORMATION

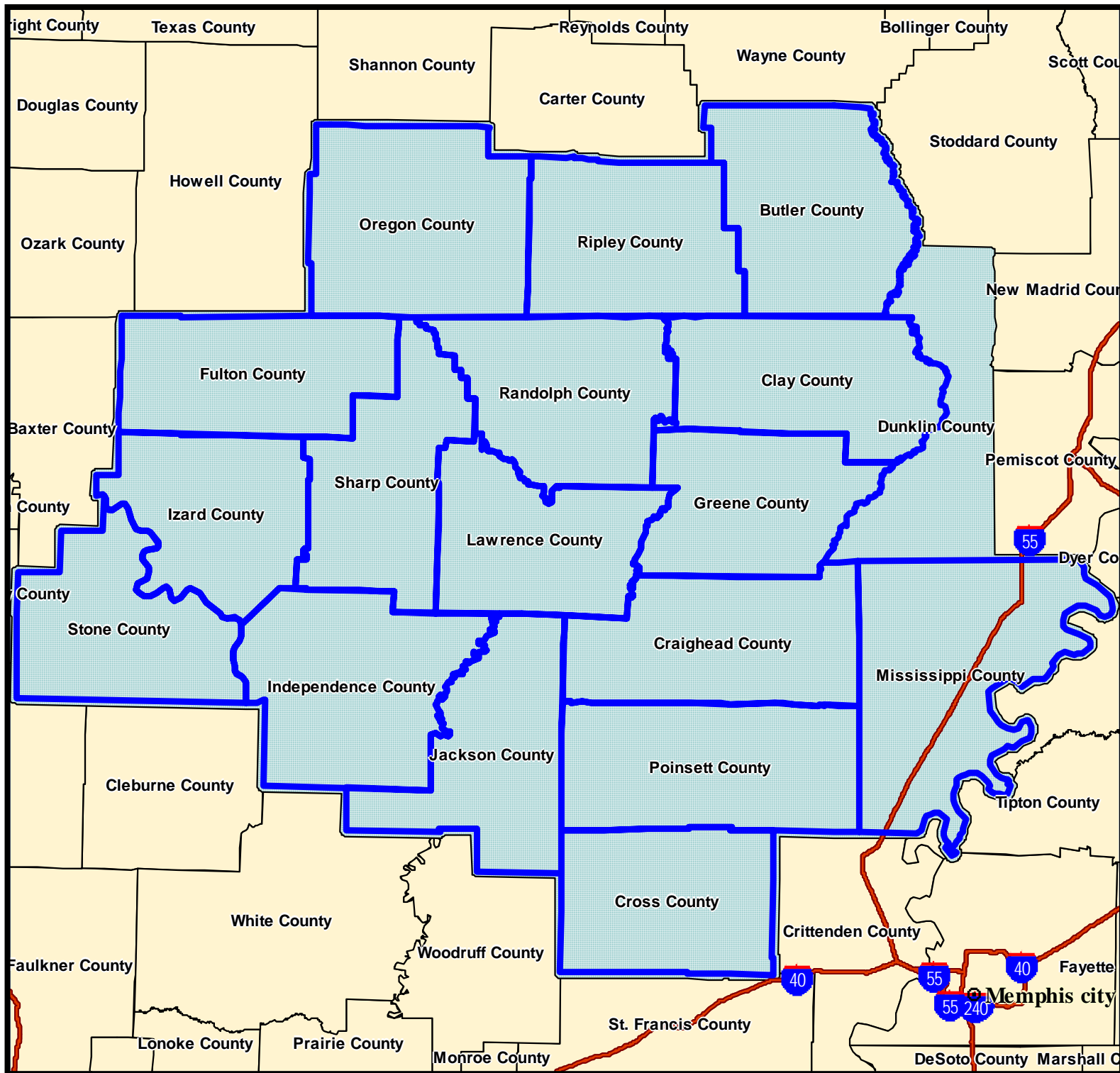
U.S. CENSUS BUREAU 2005 ESTIMATES (TRADE AREA COUNTIES AND POPULATION TRENDS)

DEMOGRAPHICSNOW GEOGRAPHIC DATABASE (WWW.DEMOGRAPHICSNOW.COM) (TRADE AREA REPORTS)

NOTE: DEMOGRAPHICSNOW REPORTS DO NOT INCLUDE DUNKLIN COUNTY, MISSOURI, WHICH IS PART OF THE JONESBORO RETAIL TRADE AREA (DUE TO PROGRAM PARAMETERS). THE POPULATION OF DUNKLIN COUNTY, MISSOURI IS 32,637 (U.S. CENSUS BUREAU 2005 ESTIMATE).

MAY 30, 2007

Jonesboro Retail Trade Area



RETAIL TRADE AREA JONESBORO, ARKANSAS

Primary Trade Area

<u>County</u>	<u>Total Population 2006 Estimate</u>
Clay	16,497
Craighead	88,244
Cross	19,066
Greene	40,091
Independence	34,909
Jackson	17,426
Lawrence	16,899
Mississippi (one-half of county)	23,759
Poinsett	25,086
Randolph	18,448
Sharp	17,963
Dunklin, Missouri	<u>32,277</u>
TOTAL PRIMARY TRADE AREA	350,665

Secondary Trade Area

<u>County</u>	<u>Total Population 2006 Estimate</u>
Fulton	11,756
Izard	13,356
Mississippi (one-half of county)	23,758
Stone	11,981
Ripley, Missouri	<u>13,937</u>
TOTAL SECONDARY TRADE AREA	74,788

Tertiary Trade Area

<u>County</u>	<u>Total Population 2006 Estimate</u>
Butler, Missouri	41,582
Oregon, Missouri	<u>10,407</u>
TOTAL TERTIARY TRADE AREA	51,989

TOTAL TRADE AREA

477,442

Source: Editor & Publisher Market Guide 1994 - Counties
Population Estimates - U.S. Census Bureau, 2006 Estimates.

Editor & Publisher Market Guide
11 W. 19th Street
New York, NY 10011
Phone: 212.675.4380
Fax: 212.691.6939
E-Mail: edpub@mediainfo.com
Web: www.mediainfo.com

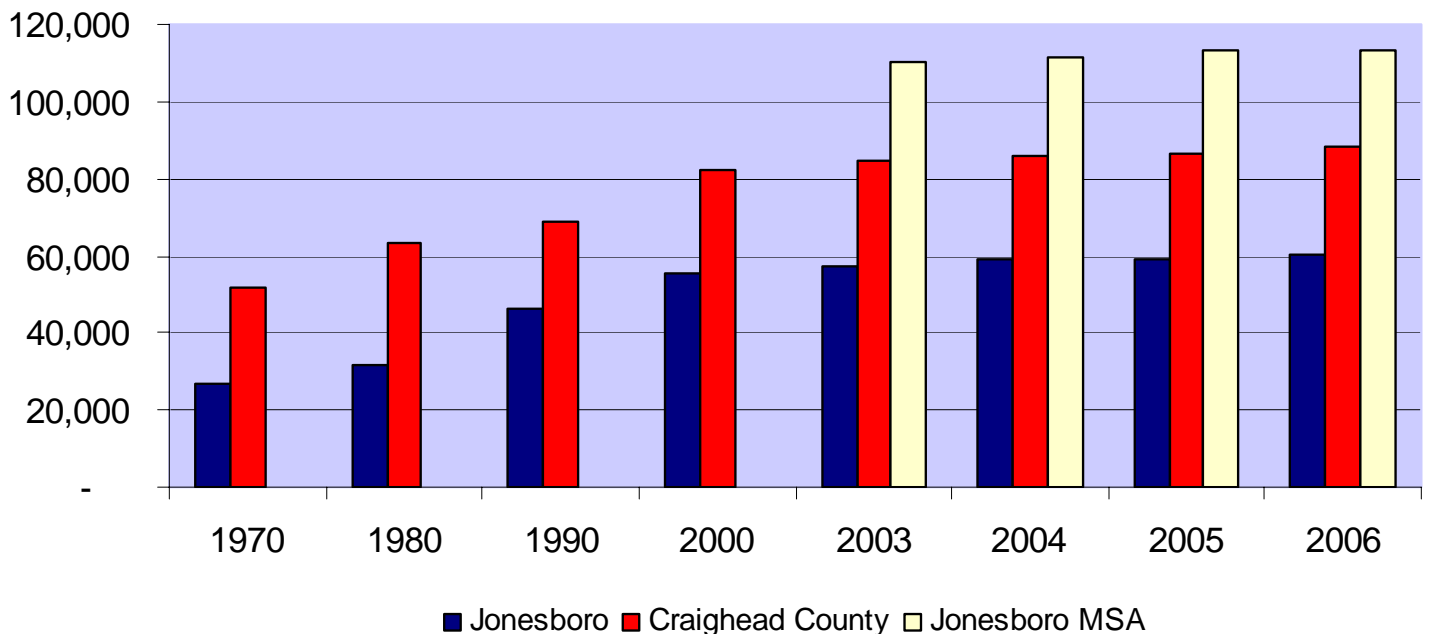
JONESBORO, ARKANSAS

Population Trends

Year	Jonesboro	Craighead County
1970	27,026	52,068
1980	31,530	63,239
1990	46,535	68,956
2000	55,515	82,148
2003	57,435	84,626 (110,041 MSA)
2004	58,799	86,191 (111,530 MSA)
2005	59,358	86,735 (113,084 MSA)
2006	60,489	88,244 (113,330 MSA)

Source: U.S. Census Bureau

Population Trends





Date: 05/30/07

Current Geography Selection: Jonesboro Retail Trade Area (Does not include Dunklin County, Missouri, population 32,637)

Rank by Population

Rank	Name	Basic Variables 2006	
			Population
1	Craighead County		87,639
	Subtotal of Extremely High		87,639
2	Mississippi County		46,829
3	Butler County		40,999
4	Greene County		39,623
	Subtotal of Above Average		127,451
5	Independence County		34,859
6	Poinsett County		25,153
7	Cross County		18,957
8	Randolph County		18,562
9	Sharp County		17,577
10	Jackson County		17,407
11	Lawrence County		17,247
12	Clay County		16,370
	Subtotal of Average		166,132
13	Ripley County		13,849
14	Izard County		13,355
15	Fulton County		11,977
16	Stone County		11,719
17	Oregon County		10,408
	Subtotal of Below Average		61,308
	Grand Total		442,530

Current year data is for the year **2006**, 5 year projected data is for the year **2011**. More About Our Data.
Demographic data © 2006 by Experian/Applied Geographic Solutions.

© 2007. DemographicsNow is brought to you by SRC, LLC.

SRC, DemographicsNow.com and the SRC and DemographicsNow.com logos are trademarks of SRC, LLC. All rights reserved.

Privacy Statement | License Agreement

MAJOR RETAILERS

JONESBORO, ARKANSAS

Barnes & Noble

Bed Bath & Beyond

Big Lot's

Books-A-Million

Circuit City

Dillards

Goody's

Hastings Books, Music & Video

Home Depot

JC Penney

K-Mart

Kohl's

Lowe's

Old Navy

Office Depot

Office Max

Pier One Imports

Rack Room Shoes

Sam's Wholesale Club

Shoe Carnival

Sears

Target

TJ Maxx

Wal-Mart Supercenters (2)



Date: 05/30/07

Current Geography Selection: (17 Selected) Counties: Clay County, Craighead County, Cross County, Fulton County...

Demographic Summary with Index

Index Base Average = 100

Index Base File: US

Population and Gender

Population:	2006 Estimate		2011 Projection		Percent Change	Percent Change
					1990 to 2006	2006 to 2011
Total Population	442,530		443,819		7.9%	0.3%
Total Households	183,617		190,130		16.6%	3.5%
Gender:	2006 Estimate		2011 Projection		2006 Index	2011 Index
Male	215,371	48.7%	216,605	48.8%	99	99
Female	227,159	51.3%	227,214	51.2%	101	101

Population by Race/Ethnicity

Race:	2006 Estimate		2011 Projection		2006 Index	2011 Index
White	392,047	88.6%	391,239	88.2%	117	116
Black	36,341	8.2%	36,061	8.1%	68	68
American Indian/Eskimo	2,141	0.5%	2,116	0.5%	69	77
Asian	1,968	0.4%	2,393	0.5%	10	11
Hawaiian/Pacific Islander	160	0.0%	228	0.1%	25	34
Other	3,086	0.7%	5,230	1.2%	16	29
Multi-Race	6,786	1.5%	6,550	1.5%	69	78
Hispanic Ethnicity	8,821	2.0%	10,932	2.5%	177	107

Population by Age

Age:	2006 Estimate		2011 Projection		2006 Index	2011 Index
0 to 4	29,075	6.6%	30,025	6.8%	96	100
5 to 14	57,542	13.0%	56,062	12.6%	96	97
15 to 19	30,101	6.8%	28,792	6.5%	97	96
20 to 24	31,270	7.1%	29,480	6.6%	101	97
25 to 34	56,647	12.8%	59,407	13.4%	95	100
35 to 44	57,064	12.9%	53,217	12.0%	89	90
45 to 54	60,285	13.6%	58,907	13.3%	95	92
55 to 64	51,027	11.5%	53,654	12.1%	109	101
65 to 74	37,078	8.4%	40,302	9.1%	129	122
75 to 84	23,311	5.3%	24,495	5.5%	122	130
85+	9,130	2.1%	9,478	2.1%	113	117
Median Age:						
Total Population	38.1		38.4		104	102

Households by Income

2006 Estimate

2011 Projection

2006 Index

2011 Index

\$0 - \$14,999	42,793	23.3%	41,207	21.7%	169	170
\$15,000 - \$24,999	30,703	16.7%	29,868	15.7%	151	154
\$25,000 - \$34,999	27,301	14.9%	28,440	15.0%	130	133
\$35,000 - \$49,999	29,995	16.3%	29,391	15.5%	108	113
\$50,000 - \$74,999	29,219	15.9%	31,233	16.4%	81	87
\$75,000 - \$99,999	12,009	6.5%	14,900	7.8%	56	62
\$100,000 - \$149,999	7,348	4.0%	9,629	5.1%	37	41
\$150,000 +	4,249	2.3%	5,462	2.9%	36	35
Average Hhld Income	\$41,897		\$44,356		66	64
Median Hhld Income	\$31,585		\$33,233		65	63
Per Capita Income	\$17,926		\$19,602		73	74

Current year data is for the year **2006**, 5 year projected data is for the year **2011**. More About Our Data.
Demographic data © 2006 by Experian/Applied Geographic Solutions.

© 2007. DemographicsNow is brought to you by SRC, LLC.

SRC, DemographicsNow.com and the SRC and DemographicsNow.com logos are trademarks of SRC, LLC. All rights reserved.
Privacy Statement | License Agreement



Date: 05/30/07

Current Geography Selection: (17 Selected) Counties: Clay County, Craighead County, Cross County, Fulton County...

Age By Sex Summary Report

Age by Sex Summary Report

Population Demographics

	1990 Census		2000 Census		2006 Estimate		2011 Projection		Percent Change	
	Population	%	Population	%	Population	%	Population	%	1990 to 2000	2006 to 2011
Total Population	410,257		441,056		442,530		443,819		7.5%	0.3%
Gender:										
Male	197,293	48%	213,888	48.5%	215,371	48.7%	216,605	48.8%	8.4%	0.6%
Female	212,964	52%	227,168	51.5%	227,159	51.3%	227,214	51.2%	6.7%	0.0%
Total Median Age	34.7		37.2		38.1		38.4			

Female Population By Age

Age Group	1990 Census		2000 Census		2006 Estimate		2011 Projection		Percent Change	
	Population	%	Population	%	Population	%	Population	%	1990 to 2000	2006 to 2011
0 to 4	13,566	6.4%	14,085	6.2%	14,230	6.3%	14,701	6.5%	3.8%	3.3%
5 to 14	29,398	13.8%	29,791	13.1%	28,046	12.3%	27,470	12.1%	1.3%	-2.1%
15 to 24	29,244	13.7%	30,315	13.3%	29,734	13.1%	28,283	12.4%	3.7%	-4.9%
25 to 34	30,371	14.3%	27,850	12.3%	28,338	12.5%	29,248	12.9%	-8.3%	3.2%
35 to 44	28,040	13.2%	32,212	14.2%	29,122	12.8%	27,006	11.9%	14.9%	-7.3%
45 to 54	22,379	10.5%	29,473	13.0%	30,777	13.5%	30,218	13.3%	31.7%	-1.8%
55 to 64	21,306	10.0%	23,733	10.4%	26,611	11.7%	27,855	12.3%	11.4%	4.7%
65 to 74	20,337	9.6%	19,830	8.7%	20,133	8.9%	21,703	9.6%	-2.5%	7.8%
75 to 84	13,935	6.5%	14,000	6.2%	13,835	6.1%	14,309	6.3%	0.5%	3.4%
85+	4,395	2.1%	5,879	2.6%	6,333	2.8%	6,421	2.8%	33.8%	1.4%
Female Median Age	36.3		38.6		39.8		37.0			

Male Population By Age

Age Group	1990 Census		2000 Census		2006 Estimate		2011 Projection		Percent Change	
	Population	%	Population	%	Population	%	Population	%	1990 to 2000	2006 to 2011
0 to 4	14,493	7.4%	14,758	6.9%	14,845	6.9%	15,324	7.1%	1.8%	3.2%
5 to 14	30,924	15.7%	31,638	14.8%	29,496	13.7%	28,592	13.2%	2.3%	-3.1%
15 to 24	29,872	15.1%	31,572	14.8%	31,637	14.7%	29,989	13.8%	5.7%	-5.2%
25 to 34	29,047	14.7%	27,147	12.7%	28,309	13.1%	30,159	13.9%	-6.5%	6.5%
35 to 44	26,595	13.5%	31,091	14.5%	27,942	13.0%	26,211	12.1%	16.9%	-6.2%
45 to 54	21,022	10.7%	28,167	13.2%	29,508	13.7%	28,689	13.2%	34.0%	-2.8%
55 to 64	18,549	9.4%	21,748	10.2%	24,416	11.3%	25,799	11.9%	17.2%	5.7%
65 to 74	15,944	8.1%	16,304	7.6%	16,945	7.9%	18,599	8.6%	2.3%	9.8%
75 to 84	8,935	4.5%	9,010	4.2%	9,476	4.4%	10,186	4.7%	0.8%	7.5%
85+	1,911	1.0%	2,453	1.2%	2,797	1.3%	3,057	1.4%	28.4%	9.3%

Male Median Age	33.0	35.6	36.3	36.5
-----------------	------	------	------	------

Current year data is for the year **2006**, 5 year projected data is for the year **2011**. [More About Our Data](#).
Demographic data © 2006 by Experian/Applied Geographic Solutions.

© **2007. DemographicsNow is brought to you by SRC, LLC.**

SRC, DemographicsNow.com and the SRC and DemographicsNow.com logos are trademarks of SRC, LLC. All rights reserved.
[Privacy Statement](#) | [License Agreement](#)



Date: 05/30/07

Current Geography Selection: (17 Selected) Counties: Clay County, Craighead County, Cross County, Fulton County...

Age Rank Report

Rank	Name	Population	Median	Population by Age							
			Age	0-14	15-24	25-34	35-44	45-54	55-64	65-74	75 Plus
1	Craighead County	87,639	34.2	20.4%	14.3%	16.6%	13.4%	12.8%	10.3%	6.6%	5.6%
	Subtotal of Extremely High	87,639	34.2	20.4%	14.3%	16.6%	13.4%	12.8%	10.3%	6.6%	5.6%
2	Mississippi County	46,829	34.3	24.0%	14.9%	11.9%	12.7%	13.5%	10.3%	7.1%	5.7%
3	Butler County	40,999	39.2	19.2%	13.3%	12.5%	12.7%	14.2%	11.6%	8.4%	8.2%
4	Greene County	39,623	37.2	20.3%	13.4%	13.3%	13.8%	13.7%	11.1%	7.8%	6.6%
	Subtotal of Above Average	127,451	36.9	21.3%	13.9%	12.5%	13.0%	13.8%	11.0%	7.7%	6.8%
5	Independence County	34,859	38.7	19.3%	14.1%	12.1%	13.2%	14.6%	12.0%	8.1%	6.6%
6	Poinsett County	25,153	37.7	20.5%	13.9%	12.3%	12.9%	13.7%	11.5%	8.3%	6.9%
7	Cross County	18,957	37.4	20.4%	14.9%	11.8%	13.3%	14.1%	11.7%	7.3%	6.5%
8	Randolph County	18,562	40.2	18.1%	14.0%	11.8%	12.8%	13.7%	12.2%	9.1%	8.4%
9	Sharp County	17,577	44.2	16.4%	12.4%	10.3%	11.8%	12.9%	12.7%	11.9%	11.5%
10	Jackson County	17,407	39.3	17.6%	15.1%	12.2%	12.8%	14.0%	12.6%	8.3%	7.4%
11	Lawrence County	17,247	39.4	18.7%	14.2%	11.9%	12.5%	13.3%	11.5%	9.2%	8.7%
12	Clay County	16,370	41.9	18.0%	12.7%	10.9%	12.6%	13.5%	12.7%	10.0%	9.5%
	Subtotal of Average	166,132	39.6	18.8%	14.0%	11.7%	12.8%	13.8%	12.1%	8.9%	7.9%
13	Ripley County	13,849	39.8	18.9%	13.9%	11.9%	12.3%	13.6%	11.9%	9.4%	8.1%
14	Izard County	13,355	43.3	15.9%	12.1%	11.4%	13.0%	13.4%	12.7%	11.3%	10.3%
15	Fulton County	11,977	44.6	16.2%	12.9%	10.0%	11.5%	14.1%	13.3%	11.8%	10.2%
16	Stone County	11,719	44.7	16.2%	12.6%	10.2%	11.4%	14.4%	13.8%	12.0%	9.4%
17	Oregon County	10,408	42.4	17.4%	13.2%	10.6%	12.3%	14.0%	13.4%	10.0%	9.1%
	Subtotal of Below Average	61,308	42.9	16.9%	13.0%	10.9%	12.1%	13.9%	13.0%	10.9%	9.4%
	Grand Total	442,530	38.1	19.6%	13.9%	12.8%	12.9%	13.6%	11.5%	8.4%	7.3%

Current year data is for the year 2006, 5 year projected data is for the year 2011. More About Our Data.
Demographic data © 2006 by Experian/Applied Geographic Solutions.

© 2007. DemographicsNow is brought to you by SRC, LLC.

SRC, DemographicsNow.com and the SRC and DemographicsNow.com logos are trademarks of SRC, LLC. All rights reserved.
Privacy Statement | License Agreement



Date: 05/30/07

Current Geography Selection: (17 Selected) Counties: Clay County, Craighead County, Cross County, Fulton County...

Income Rank Report

Rank	Name	Household Income			Median Age	Total Households
		Median	Average	Per Capita		
1	Craighead County	\$36,689	\$47,209	\$20,000	34.2	36,153
2	Independence County	\$35,654	\$44,993	\$18,921	38.7	14,318
	Subtotal of High	\$36,369	\$46,581	\$19,693	35.3	50,471
3	Greene County	\$34,887	\$45,473	\$19,189	37.2	16,300
4	Cross County	\$32,720	\$45,052	\$18,386	37.4	7,512
	Subtotal of Above Average	\$34,215	\$45,340	\$18,929	37.3	23,812
5	Randolph County	\$31,242	\$39,483	\$17,000	40.2	7,757
6	Butler County	\$31,094	\$42,079	\$18,940	39.2	17,878
7	Mississippi County	\$30,715	\$40,687	\$16,476	34.3	18,228
8	Lawrence County	\$30,036	\$37,524	\$16,194	39.4	7,223
9	Poinsett County	\$29,902	\$36,770	\$15,469	37.7	10,281
10	Izard County	\$28,813	\$37,633	\$16,825	43.3	5,709
11	Fulton County	\$28,597	\$41,508	\$18,311	44.6	5,165
	Subtotal of Average	\$30,353	\$39,846	\$17,092	38.5	72,241
12	Clay County	\$28,298	\$37,984	\$17,199	41.9	7,228
13	Jackson County	\$28,247	\$41,612	\$16,943	39.3	6,593
14	Sharp County	\$28,129	\$37,125	\$16,756	44.2	7,713
15	Ripley County	\$25,471	\$34,729	\$15,364	39.8	5,917
16	Stone County	\$25,291	\$37,190	\$16,375	44.7	5,065
17	Oregon County	\$24,862	\$33,822	\$15,364	42.4	4,577
	Subtotal of Below Average	\$26,951	\$37,309	\$16,438	41.9	37,093
	Grand Total	\$31,585	\$41,897	\$17,926	38.1	183,617

Current year data is for the year 2006, 5 year projected data is for the year 2011. More About Our Data.
Demographic data © 2006 by Experian/Applied Geographic Solutions.

© 2007. DemographicsNow is brought to you by SRC, LLC.

SRC, DemographicsNow.com and the SRC and DemographicsNow.com logos are trademarks of SRC, LLC. All rights reserved.
Privacy Statement | License Agreement



Date: 05/30/07

Current Geography Selection: (17 Selected) Counties: Clay County, Craighead County, Cross County, Fulton County...

Consumer Expenditure Summary Report

Consumer Expenditure Totals (Average Household Annual Expenditures)

	2006 Estimate	2011 Projection	% Change 06-11
Total Households	183,617	190,130	3.5%
Total Avg Household Expenditure	\$38,888	\$40,248	3.5%
Total Avg Retail Expenditure	\$17,294	\$17,872	3.3%

Consumer Expenditure Detail (Average Household Annual Expenditures)

	2006 Estimate	% of Total	2011 Projection	% of Total	% Change 06-11
Airline Fares	\$280.62	0.7%	\$293.42	0.7%	4.6%
Alcoholic Beverages	\$462.44	1.2%	\$481.98	1.2%	4.2%
Alimony & Child Support	\$197.04	0.5%	\$206.46	0.5%	4.8%
Apparel	\$562.18	1.4%	\$581.04	1.4%	3.4%
Apparel Services & Acces	\$60.39	0.2%	\$63.07	0.2%	4.4%
Audio Equipment	\$69.10	0.2%	\$71.25	0.2%	3.1%
Babysitting & Elderly Care	\$305.59	0.8%	\$318.52	0.8%	4.2%
Books	\$48.14	0.1%	\$49.99	0.1%	3.8%
Books & Supplies	\$122.22	0.3%	\$128.21	0.3%	4.9%
Boys Apparel	\$33.41	0.1%	\$34.15	0.1%	2.2%
Cellular Phone Service	\$334.94	0.9%	\$344.26	0.9%	2.8%
Cigarettes	\$272.87	0.7%	\$277.24	0.7%	1.6%
Computer Hardware	\$262.33	0.7%	\$274.16	0.7%	4.5%
Computer Information Svcs	\$124.73	0.3%	\$131.40	0.3%	5.3%
Computer Software	\$20.45	0.1%	\$21.37	0.1%	4.5%
Contributions	\$1,378.86	3.5%	\$1,443.79	3.6%	4.7%
Coolant & Other Fluids	\$6.27	0.0%	\$6.48	0.0%	3.3%
Cosmetics & Perfume	\$83.11	0.2%	\$85.90	0.2%	3.4%
Deodorants & Other Pers Care	\$23.10	0.1%	\$23.87	0.1%	3.4%
Education	\$872.88	2.2%	\$915.38	2.3%	4.9%
Electricity	\$1,110.03	2.9%	\$1,136.48	2.8%	2.4%
Entertainment	\$2,209.26	5.7%	\$2,293.22	5.7%	3.8%
Fees & Admissions	\$519.88	1.3%	\$546.62	1.4%	5.1%
Finance Chgs Exc Mort & Veh	\$447.03	1.2%	\$462.00	1.1%	3.3%
Floor Coverings	\$52.70	0.1%	\$55.75	0.1%	5.8%
Food & Beverages	\$6,369.14	16.4%	\$6,556.36	16.3%	2.9%
Food At Home	\$3,444.49	8.9%	\$3,520.91	8.7%	2.2%
Food Away From Home	\$2,462.21	6.3%	\$2,553.46	6.3%	3.7%
Footwear	\$75.44	0.2%	\$77.15	0.2%	2.3%
Fuel Oil & Other Fuels	\$109.86	0.3%	\$112.92	0.3%	2.8%
Funeral & Cemetery	\$76.31	0.2%	\$78.75	0.2%	3.2%
Furniture	\$445.28	1.1%	\$466.11	1.2%	4.7%

Gasoline & Oil	\$1,864.98	4.8%	\$1,918.26	4.8%	2.9%
Gifts	\$995.41	2.6%	\$1,042.04	2.6%	4.7%
Girls Apparel	\$31.52	0.1%	\$32.39	0.1%	2.8%
Hair Care	\$45.79	0.1%	\$47.35	0.1%	3.4%
Hard Surface Flooring	\$19.97	0.1%	\$20.82	0.1%	4.3%
Health Care	\$2,639.37	6.8%	\$2,709.82	6.7%	2.7%
Health Care Insurance	\$1,276.87	3.3%	\$1,311.22	3.3%	2.7%
Health Care Services	\$633.60	1.6%	\$649.80	1.6%	2.6%
Health Care Supplies & Equip	\$728.89	1.9%	\$748.80	1.9%	2.7%
Household Services	\$241.78	0.6%	\$252.92	0.6%	4.6%
Household Supplies	\$587.32	1.5%	\$612.23	1.5%	4.2%
Household Textiles	\$122.37	0.3%	\$127.39	0.3%	4.1%
Housewares & Small App	\$840.40	2.2%	\$879.49	2.2%	4.7%
Indoor Plants & Fresh Flowers	\$52.90	0.1%	\$55.79	0.1%	5.5%
Infants Apparel	\$21.92	0.1%	\$22.62	0.1%	3.2%
Jewelry	\$24.18	0.1%	\$25.26	0.1%	4.5%
Legal & Accounting	\$83.72	0.2%	\$86.44	0.2%	3.2%
Magazines	\$26.96	0.1%	\$27.99	0.1%	3.8%
Major Appliances	\$201.54	0.5%	\$209.01	0.5%	3.7%
Mass Transit	\$75.22	0.2%	\$78.58	0.2%	4.5%
Men's Apparel	\$165.78	0.4%	\$171.98	0.4%	3.7%
Mortgage Interest	\$2,832.20	7.3%	\$2,966.54	7.4%	4.7%
Natural Gas	\$416.33	1.1%	\$427.14	1.1%	2.6%
New Car Purchased	\$882.00	2.3%	\$926.27	2.3%	5.0%
New Truck Purchased	\$1,041.79	2.7%	\$1,094.16	2.7%	5.0%
New Vehicle Purchase	\$1,923.79	4.9%	\$2,020.43	5.0%	5.0%
Newspapers	\$56.43	0.1%	\$58.60	0.1%	3.8%
Oral Hygeine Products	\$21.16	0.1%	\$21.88	0.1%	3.4%
Other Lodging	\$395.86	1.0%	\$421.59	1.0%	6.5%
Other Miscellaneous Expenses	\$86.19	0.2%	\$89.06	0.2%	3.3%
Other Repairs & Maint	\$114.43	0.3%	\$119.32	0.3%	4.3%
Other Tobacco Products	\$30.36	0.1%	\$30.84	0.1%	1.6%
Other Transportation Costs	\$436.22	1.1%	\$455.16	1.1%	4.3%
Other Utilities	\$339.33	0.9%	\$348.51	0.9%	2.7%
Paint & Wallpaper	\$51.10	0.1%	\$53.23	0.1%	4.2%
Personal Care Products	\$137.20	0.4%	\$141.82	0.4%	3.4%
Personal Care Services	\$393.08	1.0%	\$406.39	1.0%	3.4%
Personal Insurance	\$381.82	1.0%	\$399.07	1.0%	4.5%
Pet Supplies & Svcs	\$220.04	0.6%	\$227.84	0.6%	3.5%
Photographic Equip & Supplies	\$99.36	0.3%	\$103.00	0.3%	3.7%
Plumbing & Heating	\$45.24	0.1%	\$47.11	0.1%	4.1%
Property Taxes	\$1,279.58	3.3%	\$1,338.89	3.3%	4.6%
Public Transportation	\$435.98	1.1%	\$455.77	1.1%	4.5%
Records/Tapes/CD Purchases	\$110.98	0.3%	\$114.52	0.3%	0.0%
Recreational Equip & Supplies	\$891.38	2.3%	\$923.20	2.3%	3.6%
Rental Costs	\$2,187.43	5.6%	\$2,198.51	5.5%	0.5%
Roofing & Siding	\$62.24	0.2%	\$64.74	0.2%	4.0%
Satellite Dishes	\$8.71	0.0%	\$8.98	0.0%	3.1%
Shaving Needs	\$9.83	0.0%	\$10.17	0.0%	3.4%

Shelter	\$7,720.84	19.9%	\$7,994.74	19.9%	3.5%
Telephone Svc Excl Cell	\$659.37	1.7%	\$677.53	1.7%	2.8%
Televisions	\$101.06	0.3%	\$104.23	0.3%	3.1%
Transportation	\$8,057.55	20.7%	\$8,347.08	20.7%	3.6%
Tuition	\$750.67	1.9%	\$787.18	2.0%	4.9%
Used Car Purchase	\$747.74	1.9%	\$766.42	1.9%	2.5%
Used Truck Purchase	\$649.93	1.7%	\$665.79	1.7%	2.4%
Used Vehicle Purchase	\$1,397.67	3.6%	\$1,432.21	3.6%	2.5%
VCRs & Related Equipment	\$41.78	0.1%	\$43.12	0.1%	3.2%
Vehicle Insurance	\$934.92	2.4%	\$963.59	2.4%	3.1%
Vehicle Repair	\$628.09	1.6%	\$648.61	1.6%	3.3%
Vehicle Repair & Maintenance	\$634.36	1.6%	\$655.09	1.6%	3.3%
Video & Audio Equipment	\$798.00	2.1%	\$823.40	2.0%	3.2%
Video Game Hardware & Software	\$26.03	0.1%	\$26.87	0.1%	3.2%
Watches	\$4.47	0.0%	\$4.67	0.0%	4.4%
Women's Apparel	\$173.71	0.4%	\$179.69	0.4%	3.4%

Consumer Expenditure Categories contain overlapping information and will therefore NOT add up to Total Household Expenditure

Current year data is for the year **2006**, 5 year projected data is for the year **2011**. More About Our Data.
Demographic data © 2006 by Experian/Applied Geographic Solutions.

© 2007. DemographicsNow is brought to you by SRC, LLC.

SRC, DemographicsNow.com and the SRC and DemographicsNow.com logos are trademarks of SRC, LLC. All rights reserved.
Privacy Statement | License Agreement